



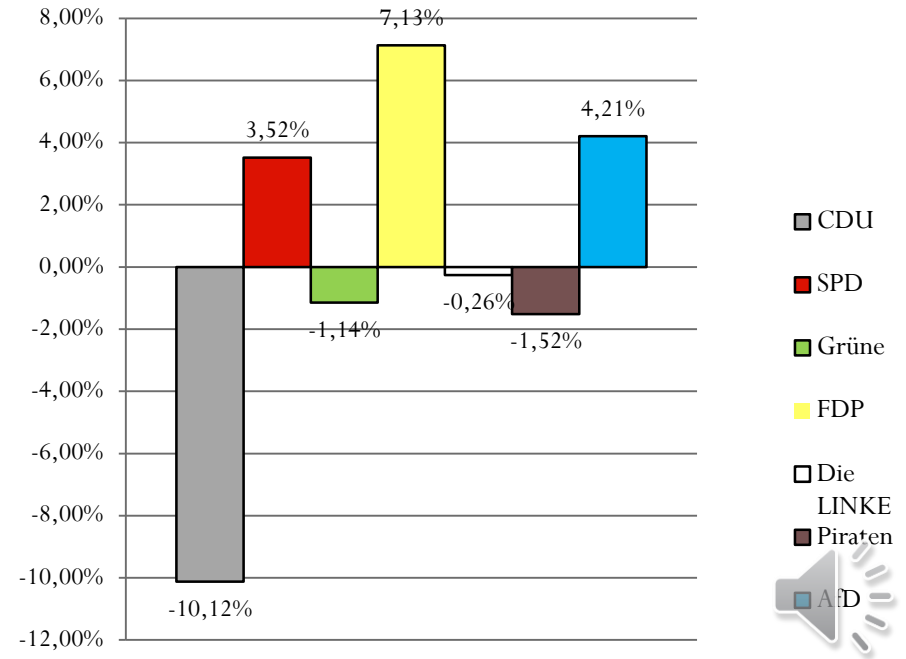
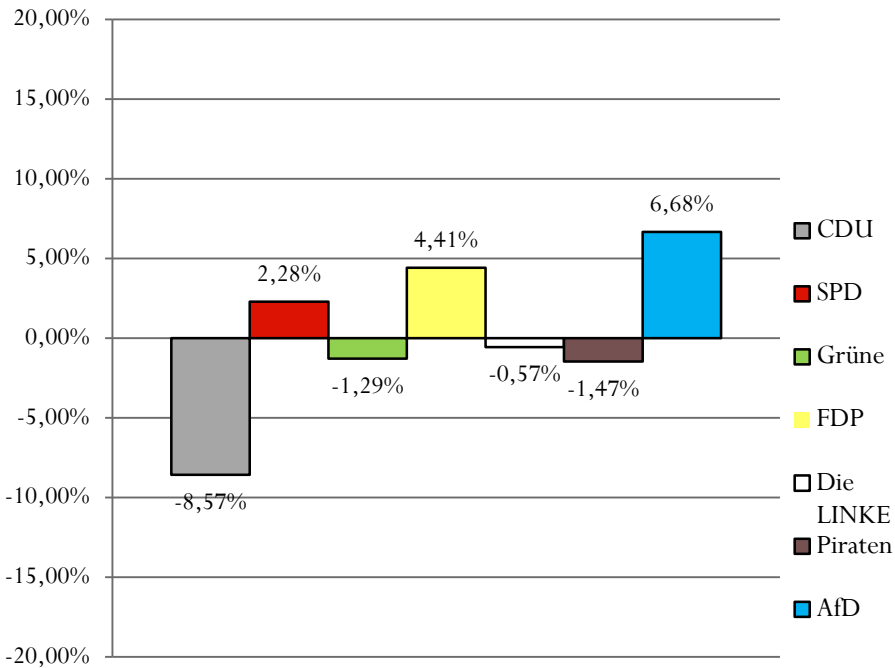
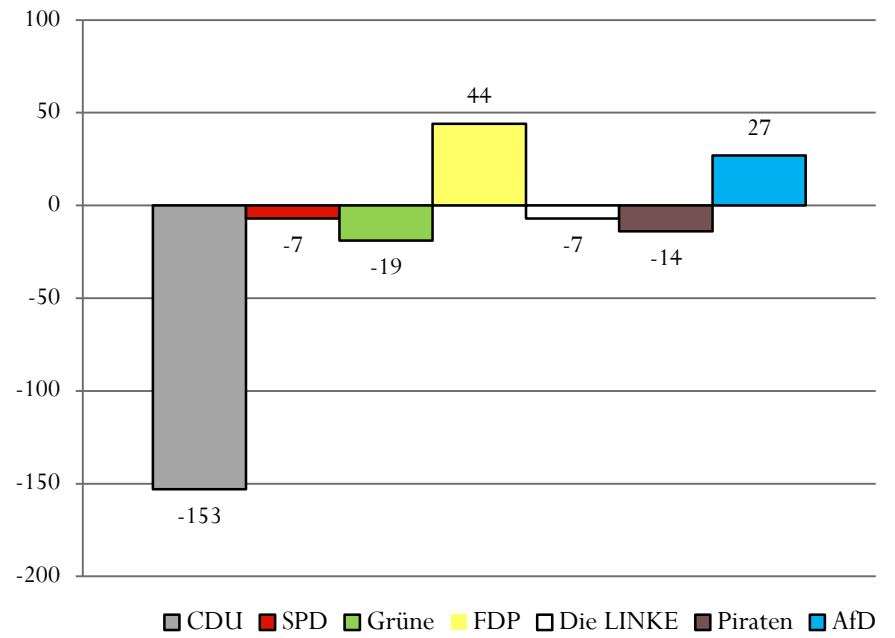
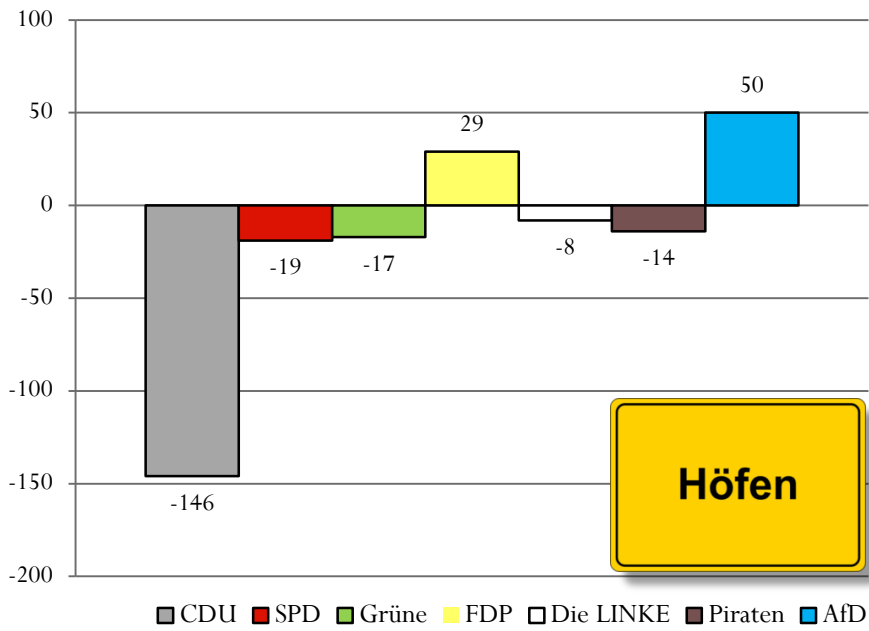
monschau

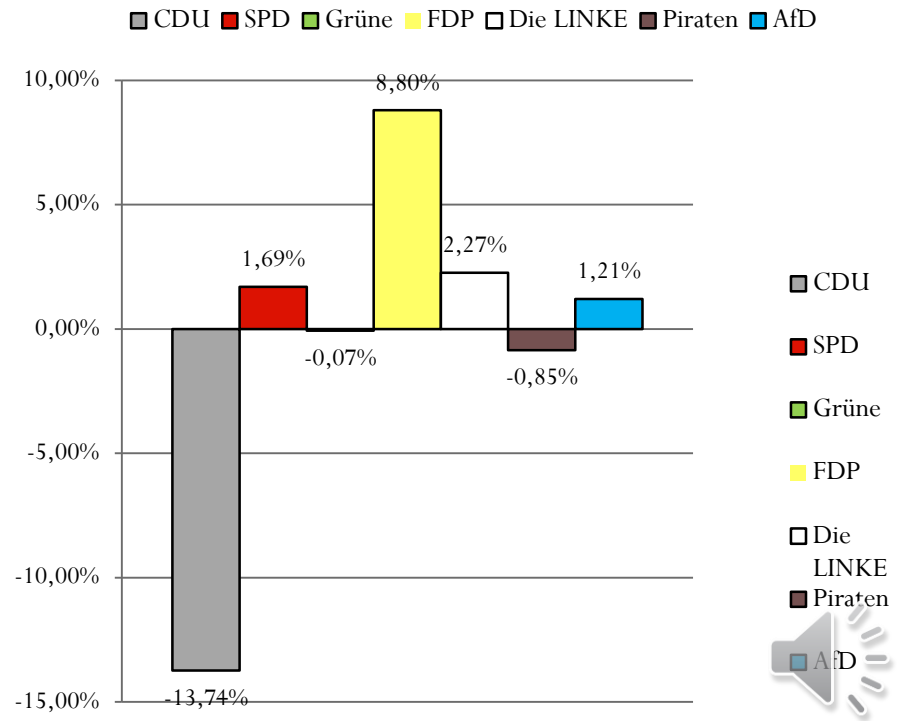
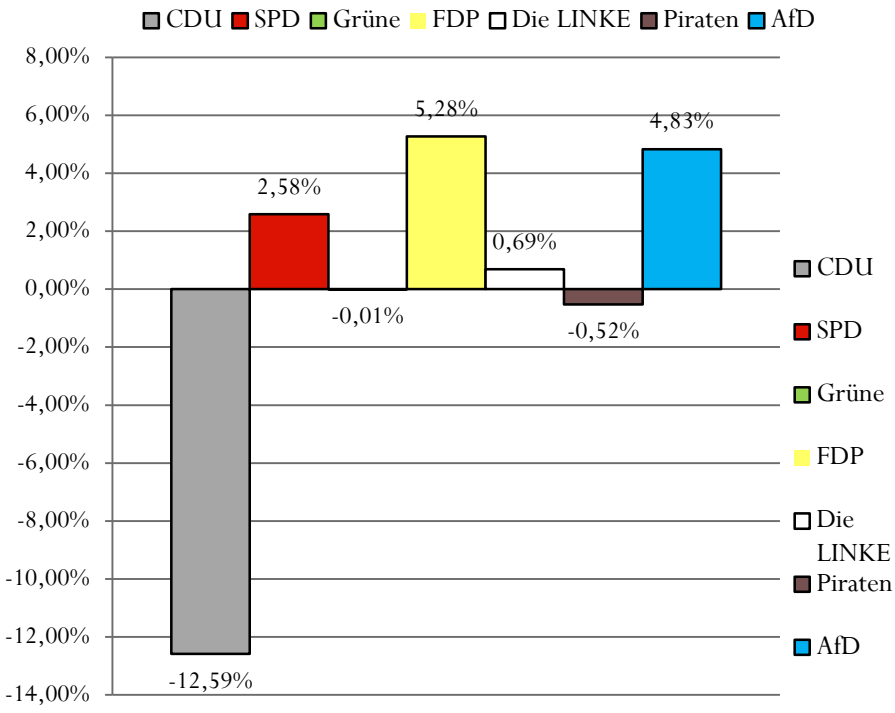
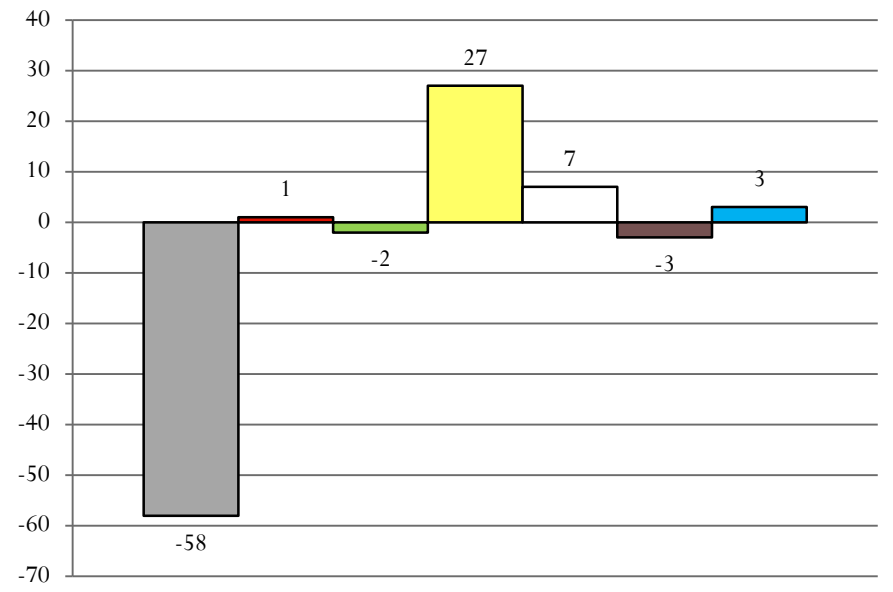
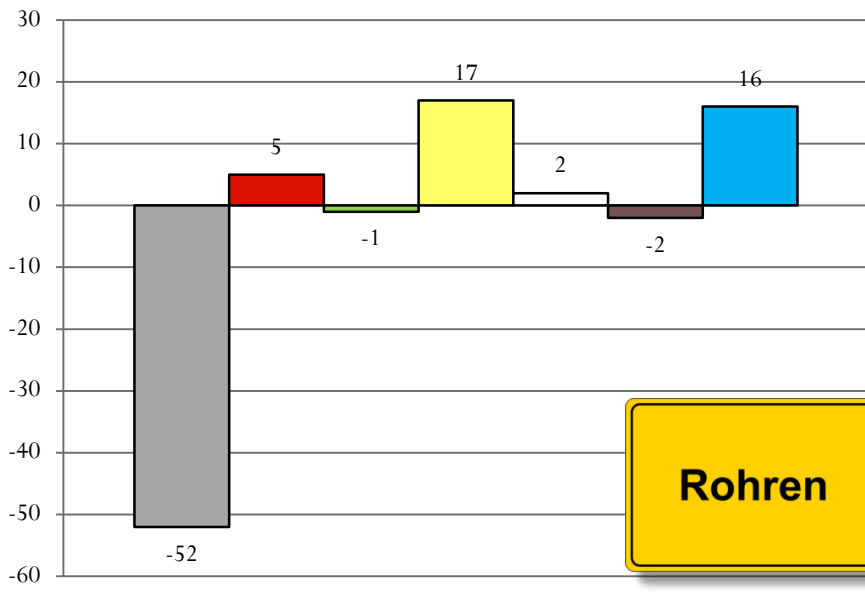
Bundestagswahl 2017

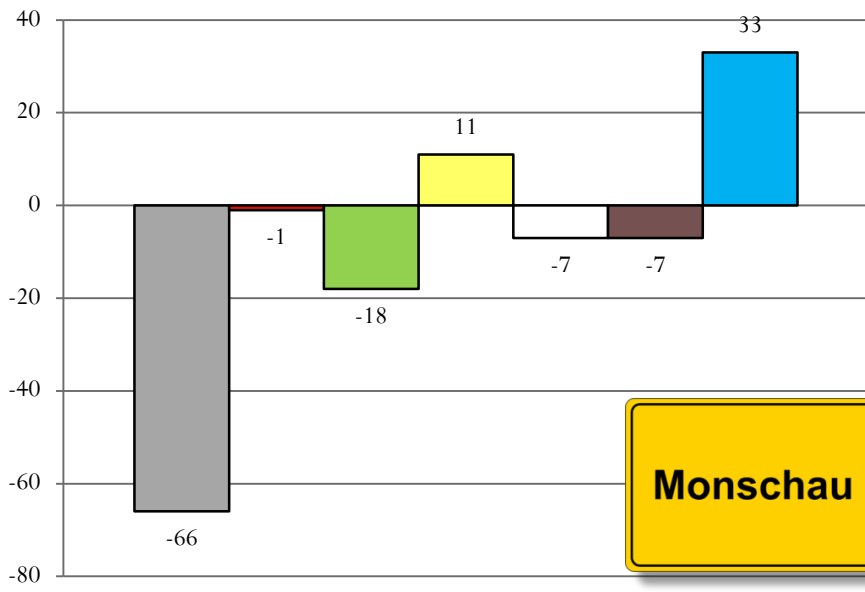
Vergleich Stadtgebiet Monschau

2013 und 2017

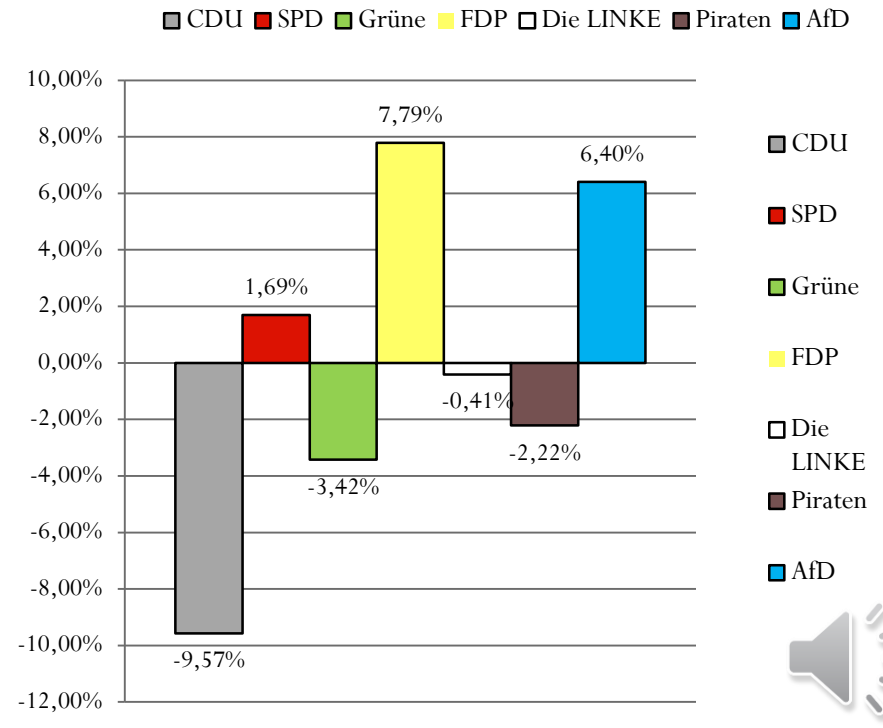
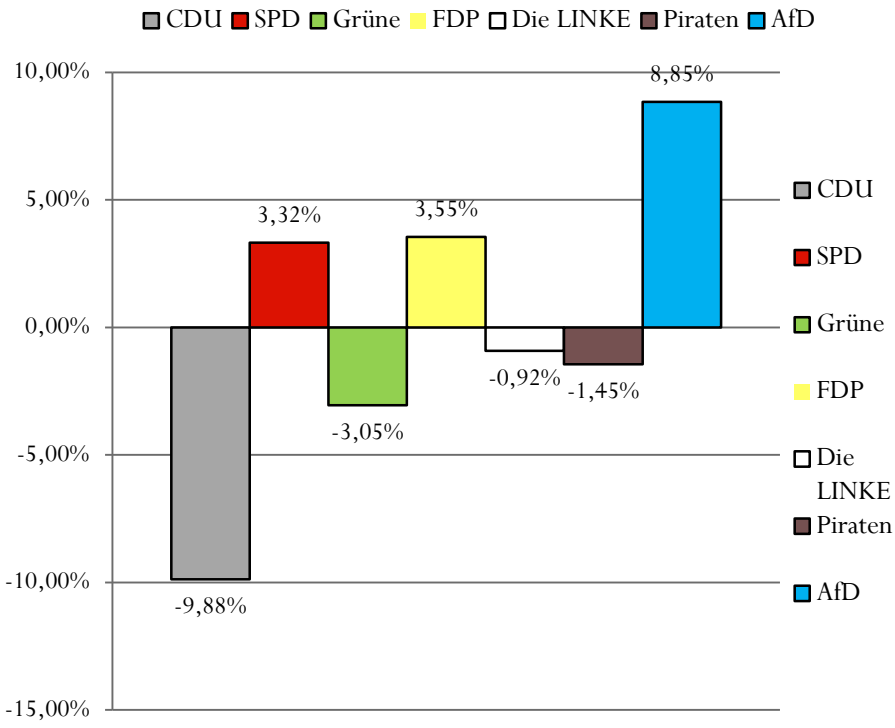
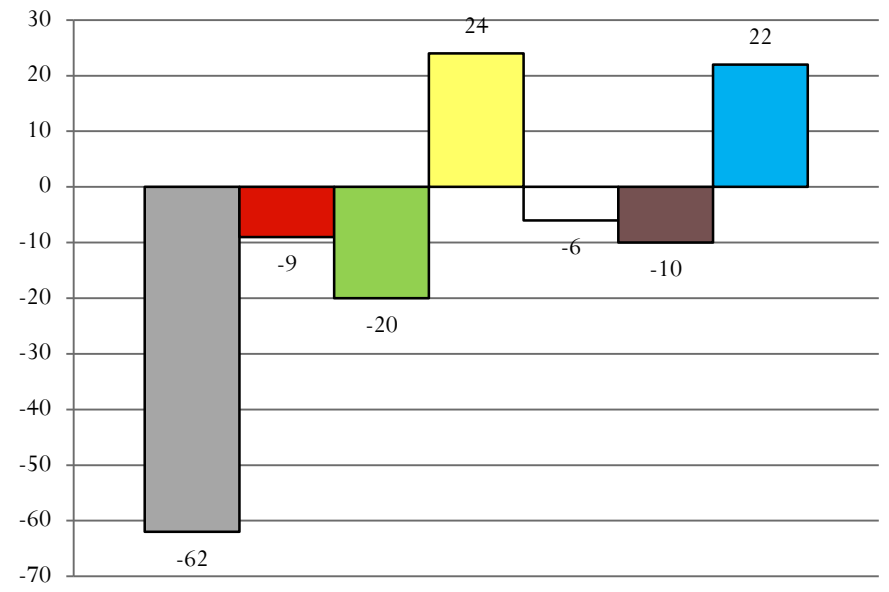


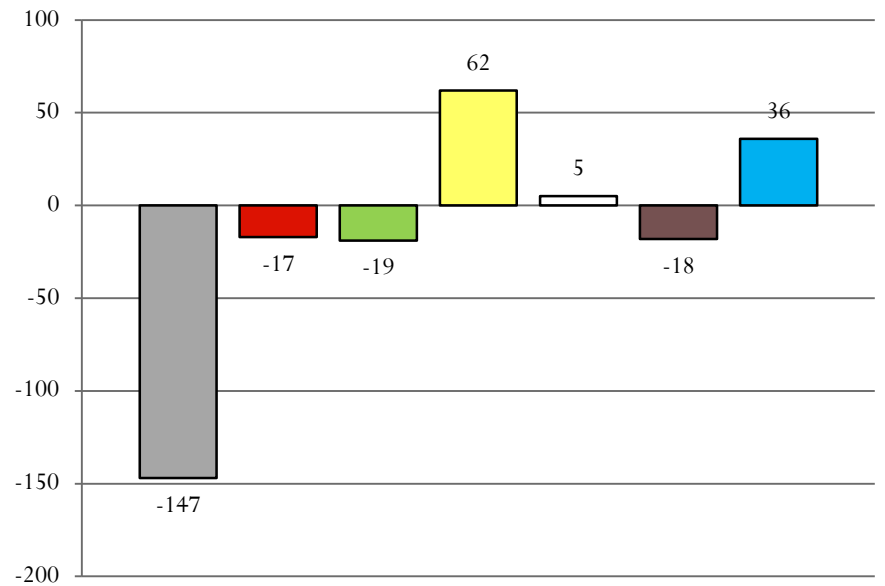
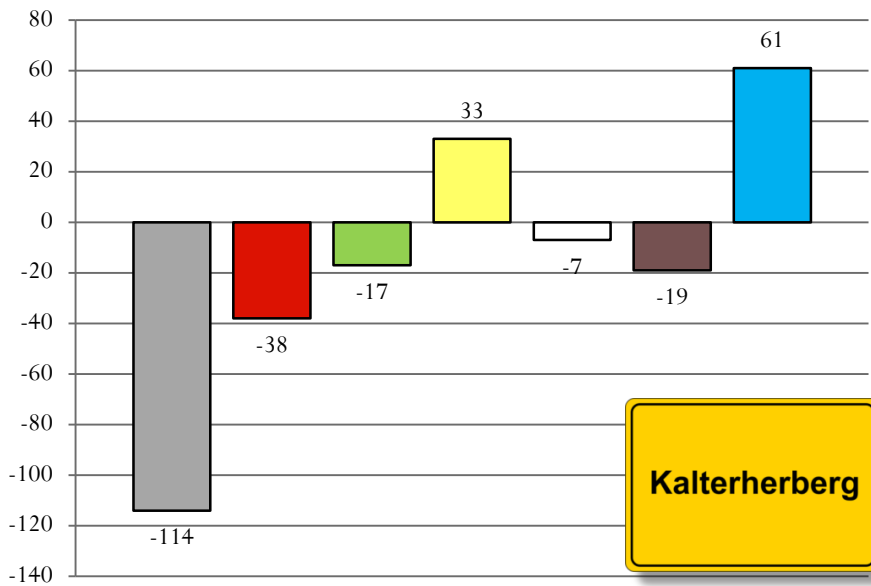






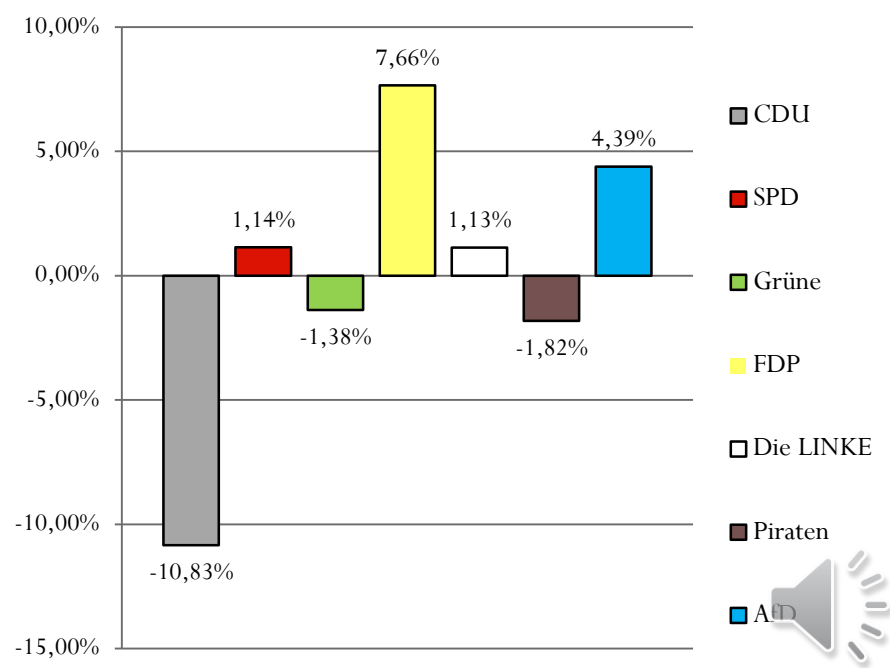
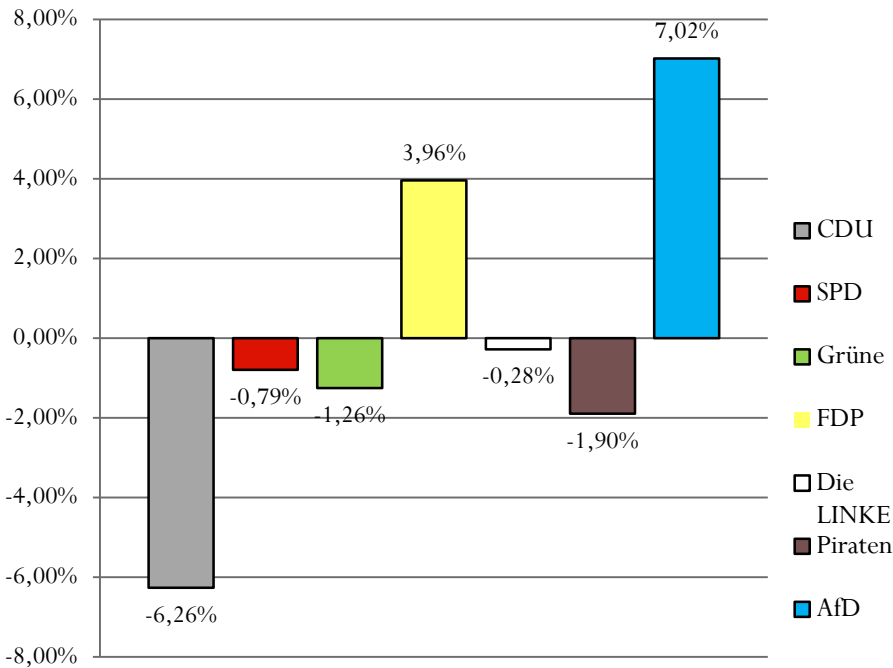
Monschau

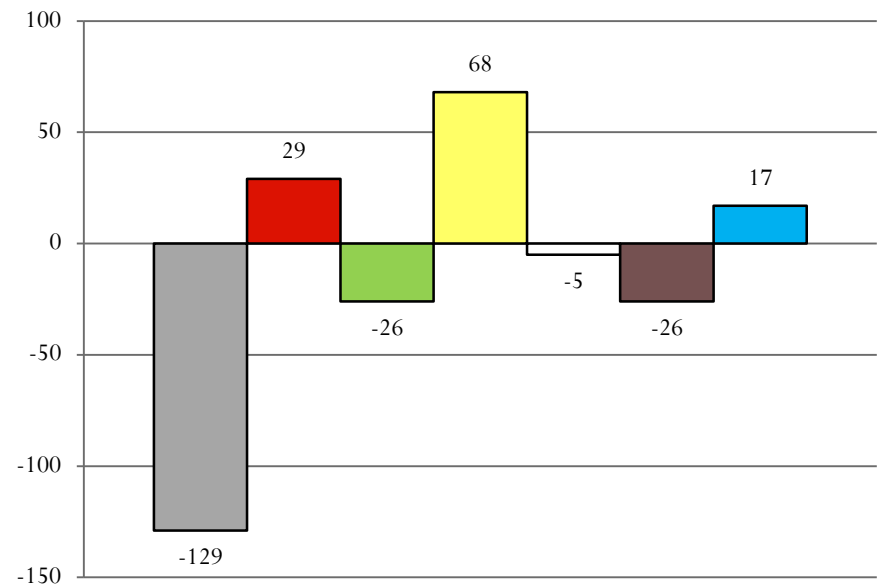
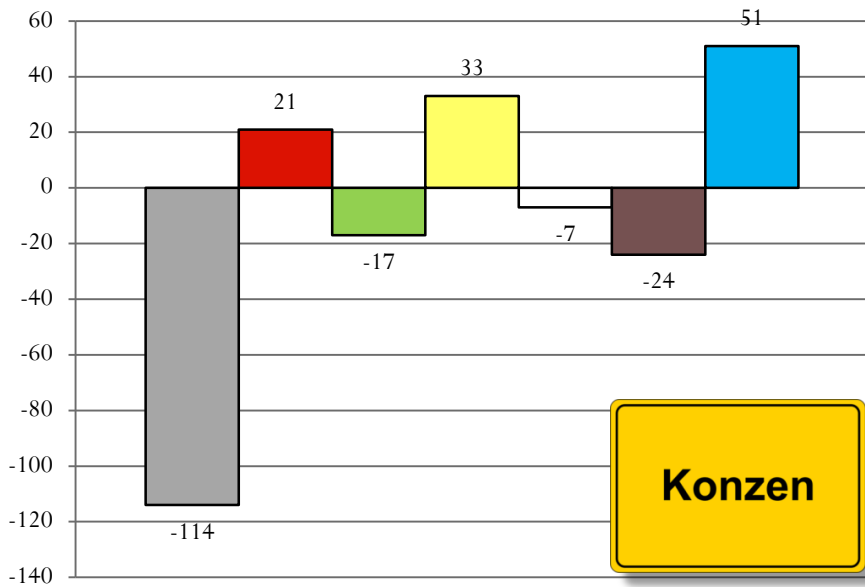




■ CDU ■ SPD ■ Grüne ■ FDP □ Die LINKE ■ Piraten ■ AfD

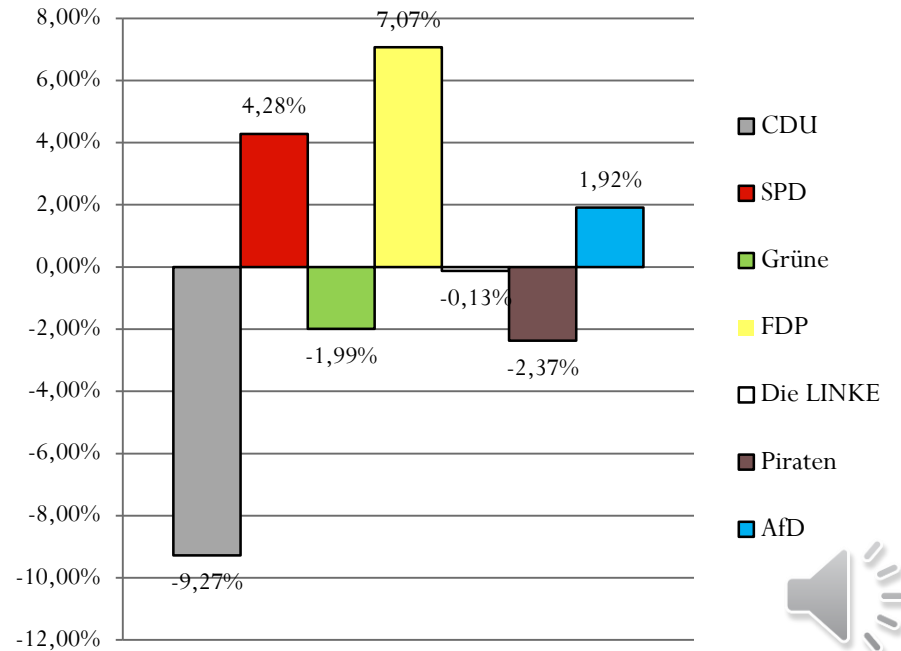
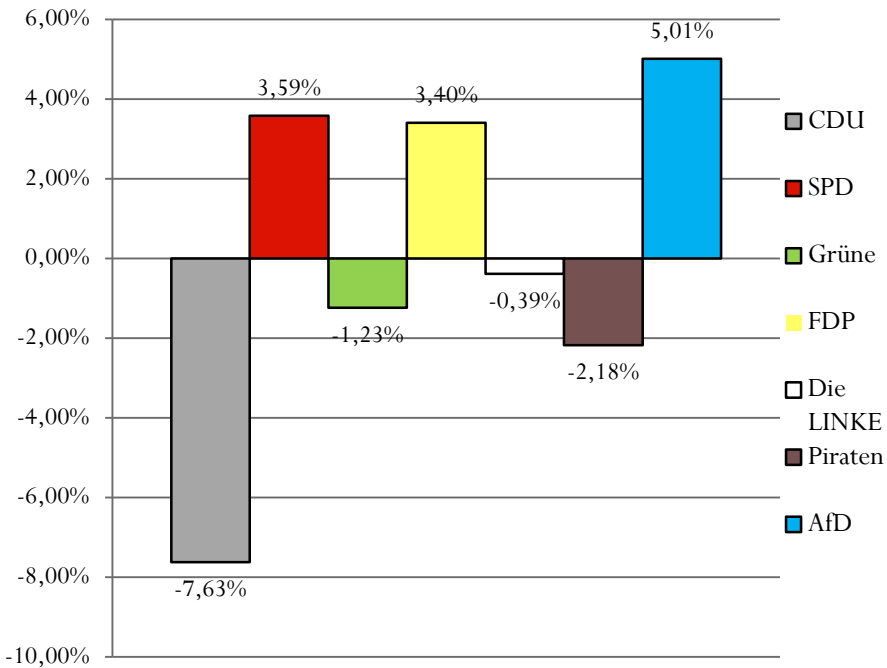
■ CDU ■ SPD ■ Grüne ■ FDP □ Die LINKE ■ Piraten ■ AfD

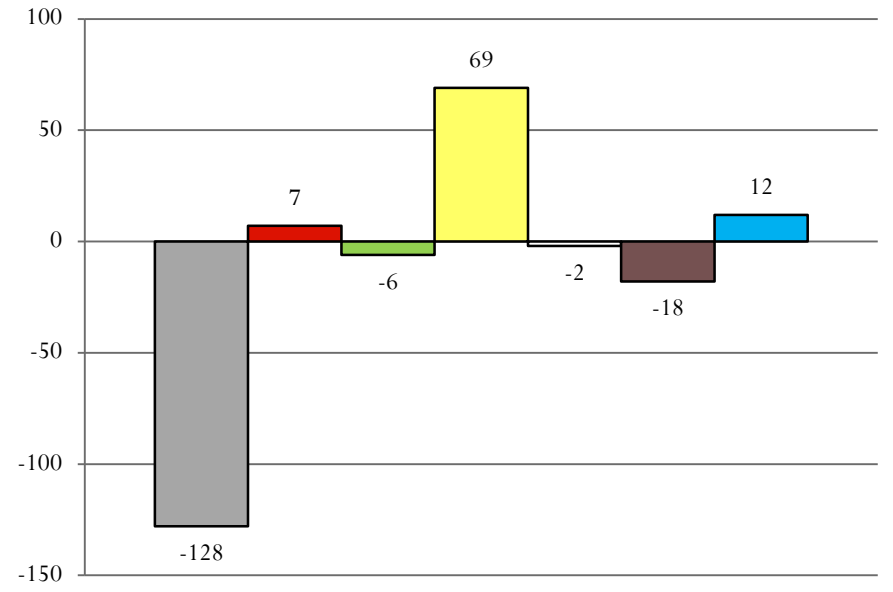
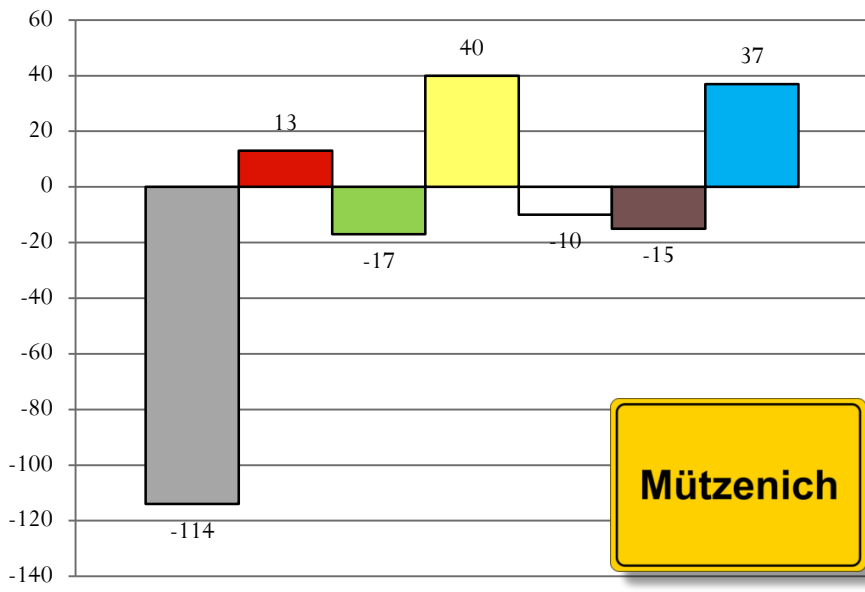




■ CDU ■ SPD ■ Grüne ■ FDP □ Die LINKE ■ Piraten ■ AfD

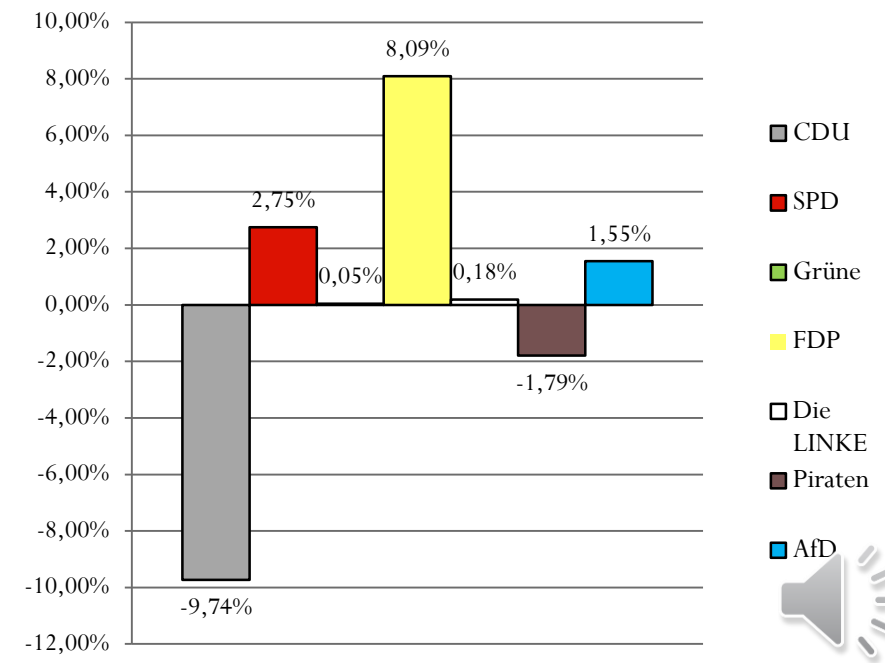
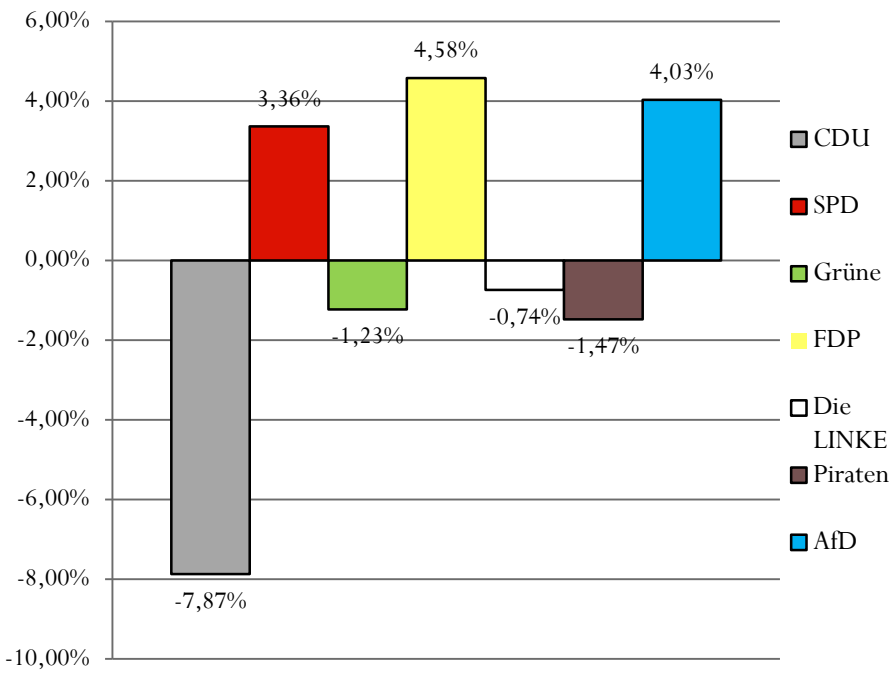
■ CDU ■ SPD ■ Grüne ■ FDP □ Die LINKE ■ Piraten ■ AfD

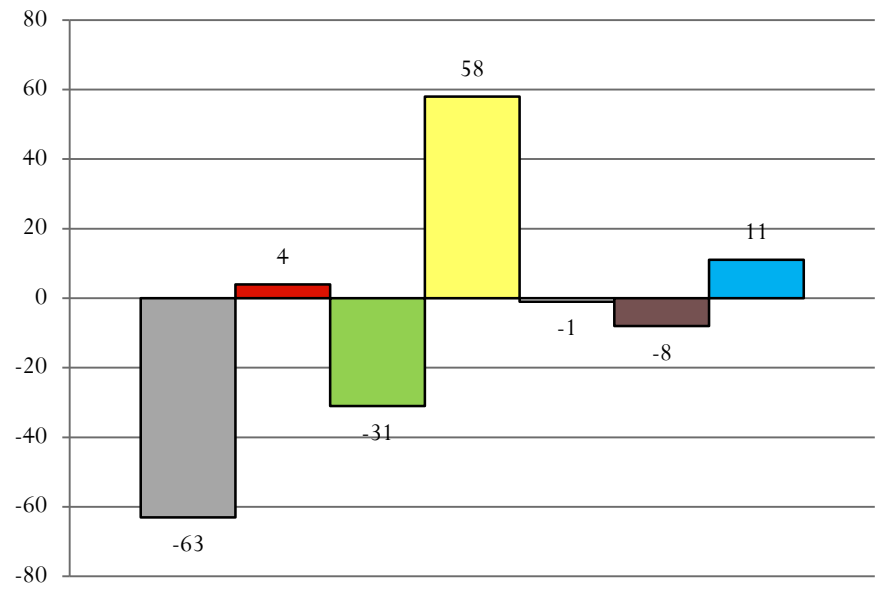
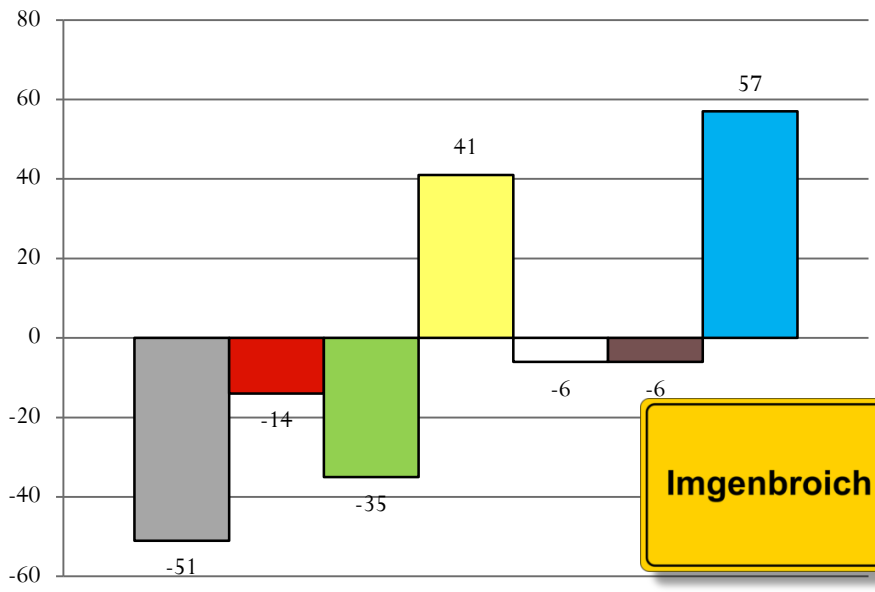




■ CDU ■ SPD ■ Grüne ■ FDP □ Die LINKE ■ Piraten ■ AfD

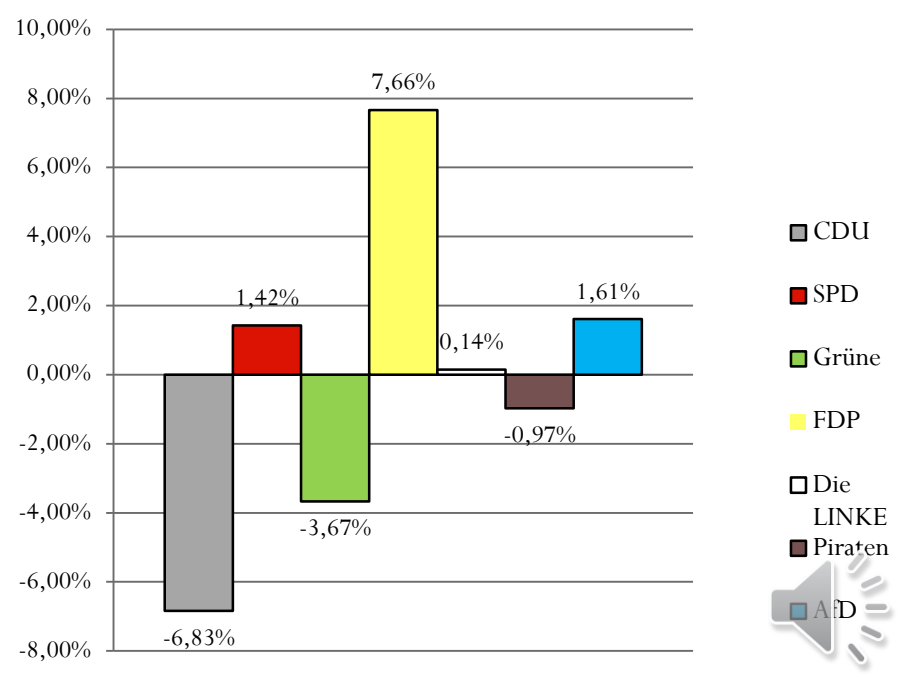
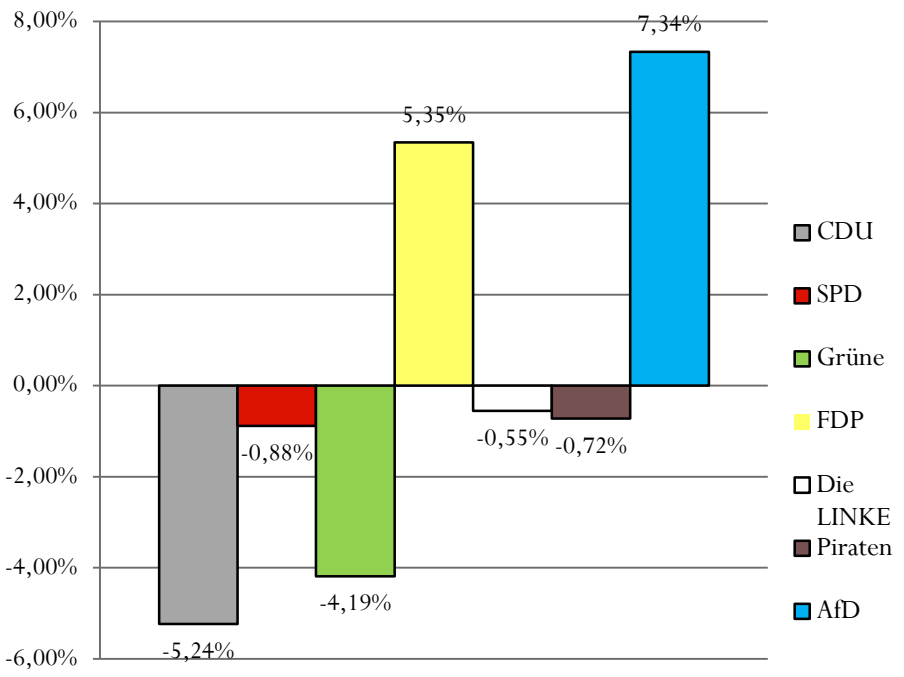
■ CDU ■ SPD ■ Grüne ■ FDP □ Die LINKE ■ Piraten ■ AfD

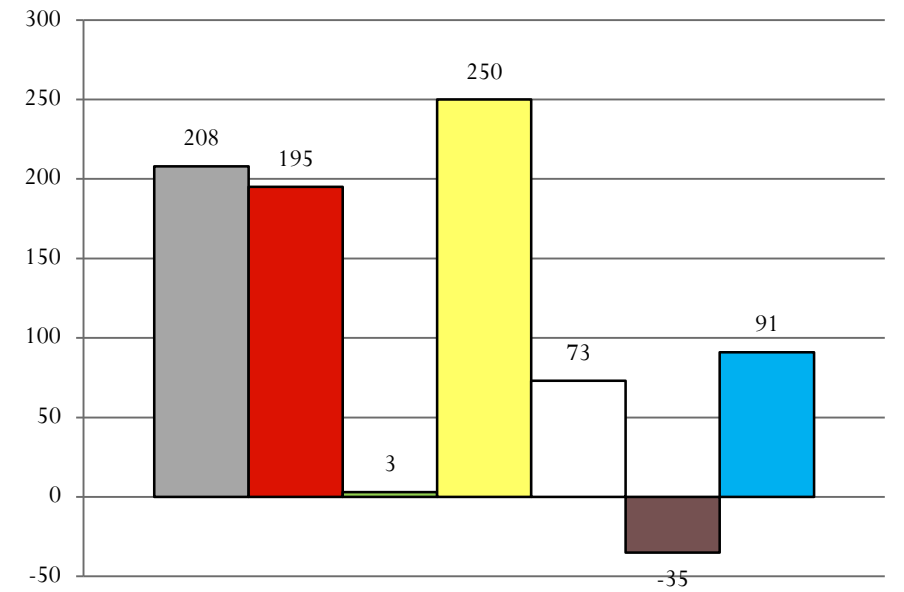
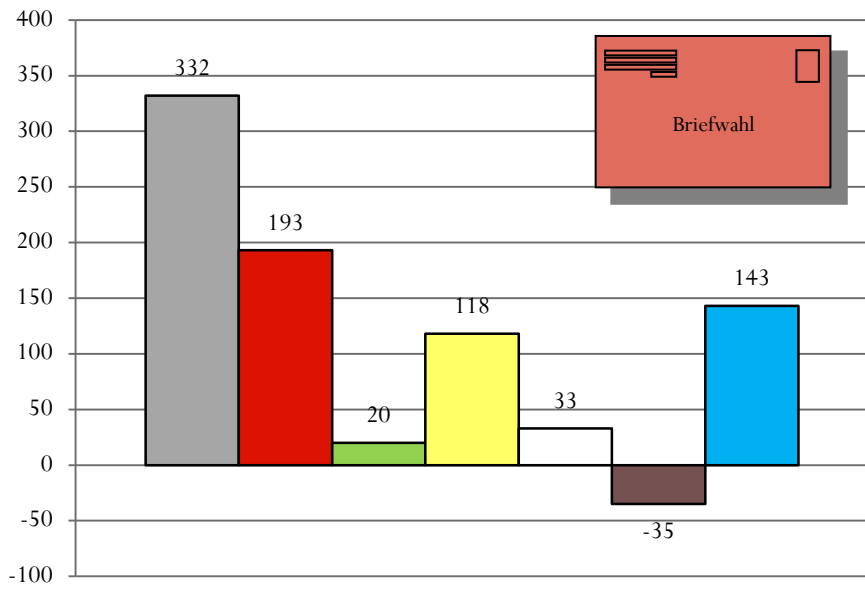




■ CDU
 ■ SPD
 ■ Grüne
 ■ FDP
 ■ Die LINKE
 ■ Piraten
 ■ AfD

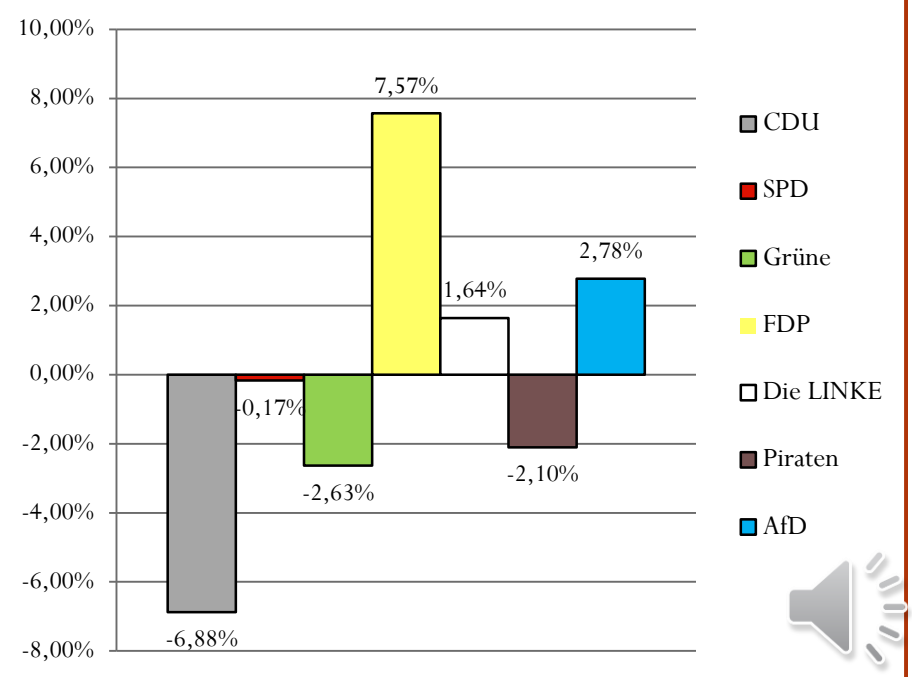
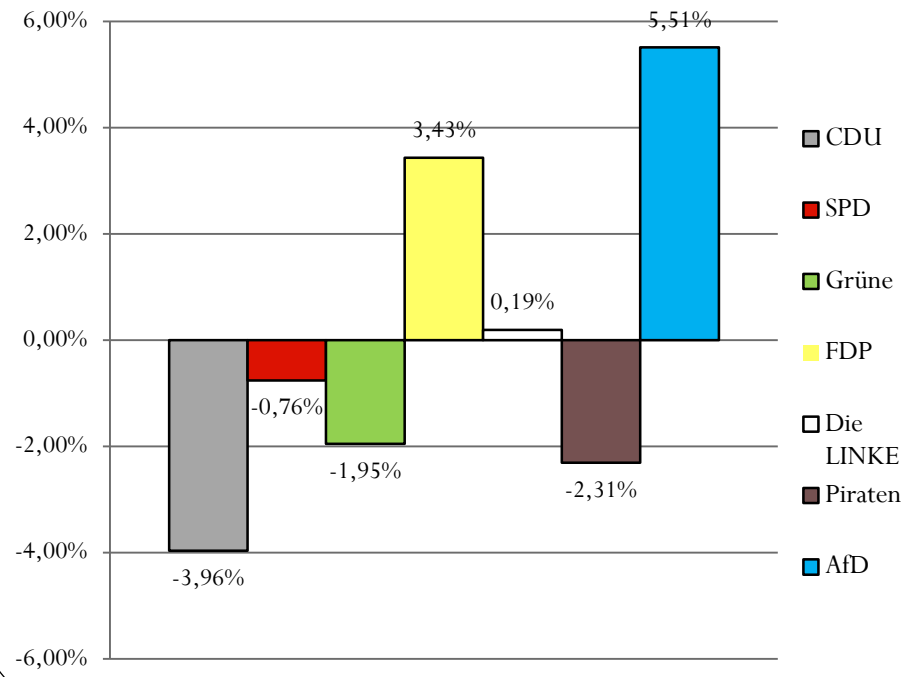
■ CDU
 ■ SPD
 ■ Grüne
 ■ FDP
 ■ Die LINKE
 ■ Piraten
 ■ AfD





■ CDU ■ SPD ■ Grüne ■ FDP □ Die LINKE ■ Piraten ■ AfD

■ CDU ■ SPD ■ Grüne ■ FDP □ Die LINKE ■ Piraten ■ AfD



Wahl zum Deutschen Bundestag 24.09.2017

Höfen

Kalterherberg

Monschau

Konzen

Rohren

Mützenich

Imgenbroich

Briefwahl

	Erststimme			Zweitstimme		
	GESAMT	Ergebnis 2013	GuV	GESAMT	Ergebnis 2013	GuV
Wähler	7694	7433	261	7694	7433	261
Gültige Stimme	7628	7297	331	7635	7341	294

CDU	3695	4020	-325	3033	3565	-532
	48,44%	55,09%	-6,65%	39,72%	48,56%	-8,84%
SPD	2079	1919	160	1968	1765	203
	27,25%	26,30%	0,96%	25,78%	24,04%	1,73%
FDP	526	204	322	1065	463	602
	6,90%	2,80%	4,10%	13,95%	6,31%	7,64%
Grüne	467	569	-102	499	619	-120
	6,12%	7,80%	-1,68%	6,54%	8,43%	-1,90%
Die LINKE	306	316	-10	418	354	64
	4,01%	4,33%	-0,32%	5,47%	4,82%	0,65%
PIRATEN	58	180	-122	26	158	-132
	0,76%	2,47%	-1,71%	0,34%	2,15%	-1,81%
AfD	448	0	448	453	234	219
	5,87%	0,00%	5,87%	5,93%	3,19%	2,75%

	Erststimme HÖFEN			Zweitstimme HÖFEN		
		Ergebnis 2013	GuV		Ergebnis 2013	GuV
Wähler	761	905	-144	761	905	-144
Gültige Stimme	749	887	-138	750	896	-146

CDU	380	526	-146	320	473	-153
	50,73%	59,30%	-8,57%	42,67%	52,79%	-10,12%
SPD	213	232	-19	198	205	-7
	28,44%	26,16%	2,28%	26,40%	22,88%	3,52%
FDP	55	26	29	102	58	44
	7,34%	2,93%	4,41%	13,60%	6,47%	7,13%
Grüne	30	47	-17	45	64	-19
	4,01%	5,30%	-1,29%	6,00%	7,14%	-1,14%
Die LINKE	16	24	-8	24	31	-7
	2,14%	2,71%	-0,57%	3,20%	3,46%	-0,26%
PIRATEN	5	19	-14	2	16	-14
	0,67%	2,14%	-1,47%	0,27%	1,79%	-1,52%
AfD	50	0	50	55	28	27
	6,68%	0,00%	6,68%	7,33%	3,13%	4,21%

	Erststimme ROHREN			Zweitstimme ROHREN		
		Ergebnis 2013	GuV		Ergebnis 2013	GuV
Wähler	331	356	-25	331	356	-25
Gültige Stimme	331	347	-16	329	352	-23

CDU	172	224	-52	138	196	-58
	51,96%	64,55%	-12,59%	41,95%	55,68%	-13,74%
SPD	82	77	5	71	70	1
	24,77%	22,19%	2,58%	21,58%	19,89%	1,69%
FDP	27	10	17	57	30	27
	8,16%	2,88%	5,28%	17,33%	8,52%	8,80%
Grüne	20	21	-1	25	27	-2
	6,04%	6,05%	-0,01%	7,60%	7,67%	-0,07%
Die LINKE	8	6	2	14	7	7
	2,42%	1,73%	0,69%	4,26%	1,99%	2,27%
PIRATEN	4	6	-2	0	3	0
	1,21%	1,73%	-0,52%	0,00%	0,85%	-0,85%
AfD	16	0	16	18	15	3
	4,83%	0,00%	4,83%	5,47%	4,26%	1,21%

	Erststimme <u>Kalterherberg</u>			Zweitstimme <u>Kalterherberg</u>		
		Ergebnis 2013	GuV		Ergebnis 2013	GuV
Wähler	881	993	-112	881	993	-112
Gültige Stimme	869	977	-108	875	977	-102

CDU	434	548	-114	353	500	-147
	49,94%	56,21%	-6,26%	40,34%	51,18%	-10,83%
SPD	248	286	-38	241	258	-17
	28,54%	29,33%	-0,79%	27,54%	26,41%	1,14%
FDP	46	13	33	110	48	62
	5,29%	1,33%	3,96%	12,57%	4,91%	7,66%
Grüne	39	56	-17	47	66	-19
	4,49%	5,74%	-1,26%	5,37%	6,76%	-1,38%
Die LINKE	35	42	-7	52	47	5
	4,03%	4,31%	-0,28%	5,94%	4,81%	1,13%
PIRATEN	4	23	-19	2	20	-18
	0,46%	2,36%	-1,90%	0,23%	2,05%	-1,82%
AfD	61	0	61	59	23	36
	7,02%	0,00%	7,02%	6,74%	2,35%	4,39%

	Erststimme <u>Konzen</u>			Zweitstimme <u>Konzen</u>		
		Ergebnis 2013	GuV		Ergebnis 2013	GuV
Wähler	1025	1101	-76	1025	1101	-76
Gültige Stimme	1018	1082	-64	1019	1088	-69

CDU	501	615	-114	415	544	-129
	49,21%	56,84%	-7,63%	40,73%	50,00%	-9,27%
SPD	283	262	21	259	230	29
	27,80%	24,21%	3,59%	25,42%	21,14%	4,28%
FDP	61	28	33	131	63	68
	5,99%	2,59%	3,40%	12,86%	5,79%	7,07%
Grüne	58	75	-17	65	91	-26
	5,70%	6,93%	-1,23%	6,38%	8,36%	-1,99%
Die LINKE	45	52	-7	53	58	-5
	4,42%	4,81%	-0,39%	5,20%	5,33%	-0,13%
PIRATEN	7	31	-24	3	29	-26
	0,69%	2,87%	-2,18%	0,29%	2,67%	-2,37%
AfD	51	0	51	57	40	17
	5,01%	0,00%	5,01%	5,59%	3,68%	1,92%

	Erststimme Monschau			Zweitstimme		
		Ergebnis 2013	GuV	Monschau	Ergebnis 2013	GuV
Wähler	377	439		377	439	
			-62			-62
Gültige Stimme	373	430		373	436	
			-57			-63

CDU	154	220	-66	120	182	-62
	41,29%	51,16%	-9,88%	32,17%	41,74%	-9,57%
SPD	100	101	-1	97	106	-9
	26,81%	23,49%	3,32%	26,01%	24,31%	1,69%
FDP	28	17	11	59	35	24
	7,51%	3,95%	3,55%	15,82%	8,03%	7,79%
Grüne	32	50	-18	30	50	-20
	8,58%	11,63%	-3,05%	8,04%	11,47%	-3,42%
Die LINKE	20	27	-7	25	31	-6
	5,36%	6,28%	-0,92%	6,70%	7,11%	-0,41%
PIRATEN	5	12	-7	2	12	-10
	1,34%	2,79%	-1,45%	0,54%	2,75%	-2,22%
AfD	33	0	33	35	13	22
	8,85%	0,00%	8,85%	9,38%	2,98%	6,40%

	Erststimme Mützenich			Zweitstimme		
		Ergebnis 2013	GuV	Mützenich	Ergebnis 2013	GuV
Wähler	927	1009		927	1009	
			-82			-82
Gültige Stimme	917	990		917	995	
			-73			-78

CDU	453	567	-114	366	494	-128
	49,40%	57,27%	-7,87%	39,91%	49,65%	-9,74%
SPD	255	242	13	239	232	7
	27,81%	24,44%	3,36%	26,06%	23,32%	2,75%
FDP	67	27	40	135	66	69
	7,31%	2,73%	4,58%	14,72%	6,63%	8,09%
Grüne	61	78	-17	76	82	-6
	6,65%	7,88%	-1,23%	8,29%	8,24%	0,05%
Die LINKE	34	44	-10	45	47	-2
	3,71%	4,44%	-0,74%	4,91%	4,72%	0,18%
PIRATEN	5	20	-15	2	20	-18
	0,55%	2,02%	-1,47%	0,22%	2,01%	-1,79%
AfD	37	0	37	40	28	12
	4,03%	0,00%	4,03%	4,36%	2,81%	1,55%

	Erststimme <u>Imgenbroich</u>			Zweitstimme		
		Ergebnis 2013	GuV	<u>Imgenbroich</u>	Ergebnis 2013	GuV
Wähler	785	816		785	816	
			-31			-31
Gültige Stimme	777	800		775	801	
			-23			-26

CDU	308	359	-51	246	309	-63
	39,64%	44,88%	-5,24%	31,74%	38,58%	-6,83%
SPD	235	249	-14	221	217	4
	30,24%	31,13%	-0,88%	28,52%	27,09%	1,42%
FDP	60	19	41	101	43	58
	7,72%	2,38%	5,35%	13,03%	5,37%	7,66%
Grüne	51	86	-35	48	79	-31
	6,56%	10,75%	-4,19%	6,19%	9,86%	-3,67%
Die LINKE	53	59	-6	64	65	-1
	6,82%	7,38%	-0,55%	8,26%	8,11%	0,14%
PIRATEN	8	14	-6	6	14	-8
	1,03%	1,75%	-0,72%	0,77%	1,75%	-0,97%
AfD	57	0	57	56	45	11
	7,34%	0,00%	7,34%	7,23%	5,62%	1,61%

	Erststimme <u>Briefwahl</u>			Zweitstimme		
		Ergebnis 2013	GuV	<u>Briefwahl</u>	Ergebnis 2013	GuV
Wähler	2607	1814		2607	1814	
			793			793
Gültige Stimme	2594	1786		2597	1796	
			808			801

CDU	1293	961	332	1075	867	208
	49,85%	53,81%	-3,96%	41,39%	48,27%	-6,88%
SPD	663	470	193	642	447	195
	25,56%	26,32%	-0,76%	24,72%	24,89%	-0,17%
FDP	182	64	118	370	120	250
	7,02%	3,58%	3,43%	14,25%	6,68%	7,57%
Grüne	176	156	20	163	160	3
	6,78%	8,73%	-1,95%	6,28%	8,91%	-2,63%
Die LINKE	95	62	33	141	68	73
	3,66%	3,47%	0,19%	5,43%	3,79%	1,64%
PIRATEN	20	55	-35	9	44	-35
	0,77%	3,08%	-2,31%	0,35%	2,45%	-2,10%
AfD	143	0	143	133	42	91
	5,51%	0,00%	5,51%	5,12%	2,34%	2,78%